

PRODUCT INFORMATION PACKET



Model No: B229SE
Catalog No: B229SE
Pool Pump Motor, 1.5 HP, 1 Ph, 60 Hz, 230/115 V, 3600 RPM, Y56J Frame, DP



Regal and Century are trademarks of Regal Rexnord Corporation or one of its affiliated companies.
©2022 Regal Rexnord Corporation, All Rights Reserved. MC017097E





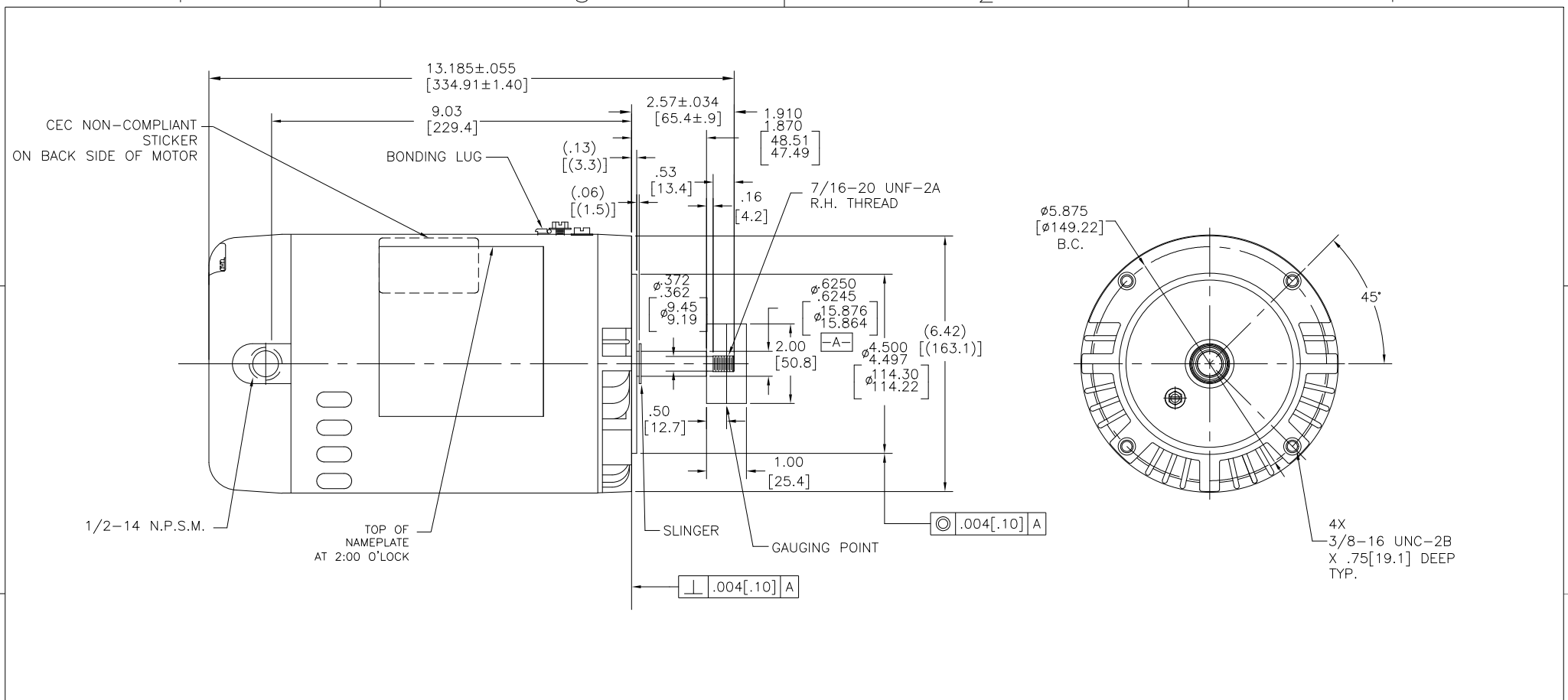
Nameplate Specifications

Output HP	1.5 Hp	Output KW	1.1 kW
Frequency	60 Hz	Voltage	230/115 V
Current	7.2/14.4 A	Speed	3450 rpm
Service Factor	1	Phase	1
Duty	Continuous	Insulation Class	B
Frame	Y56J	Enclosure	Drip Proof
Thermal Protection	Thermally Protected	Ambient Temperature	50 °C
UL	Recognized	CSA	Y
Number of Speeds	1		

Technical Specifications

Electrical Type	Permanent Split Capacitor, Single Or Dual Voltage	Poles	2
Rotation	Counterclockwise Pump End	Mounting	Round
Motor Orientation	Horizontal	Drive End Bearing	Ball
Opp Drive End Bearing	Ball	Frame Material	Rolled Steel
Shaft Type	7/16 Threaded	Overall Length	13.91 in
Frame Length	7.38 in	Shaft Diameter	0.625 in
Shaft Extension	2.57 in		
Connection Drawing	02282603-001	Outline Drawing	B229SE

This is an uncontrolled document once printed or downloaded and is subject to change without notice. Date Created:11/28/2022



NAMEPLATE DATA	EXTERNAL CONNECTION DIAGRAM	NOTES
MODEL: 184982 CUST PN: B229SE HP: 1.5 SF: 1.0 ROT: CW RPM: 3450 TYPE: CX FORM: KJM VOLTS: 230/115 AMPS: 7.2/14.4 MAX AMPS: SF AMPS: - PH: 1 INS: B DUTY: CONT ENCLOSURE: DP THERMALLY PROTECTED	<p>DUAL VOLTAGE</p> <p>HIGH VOLT CONNECTION AS SHOWN. TO CHANGE TO LOW VOLT, MOVE THE BLACK PLUG TO ALIGN THE ARROWS AT THE 115V. LOCATION. USE COPPER CONDUCTORS ONLY. INSTALL MOTOR WITH VENTS DOWN. ACCEPTABLE FOR FIELD WIRING</p>	<ol style="list-style-type: none"> SHAFT RUNOUT NOT TO EXCEED .002 [.05] T.I.R. FOR THREADED SHAFT EXT. MATING PARTS SHOULD BE RELIEVED ONE THREAD TO CLEAR FILLET. FOR THREADED SHAFT EXT. ECCENTRICITY OF THREADED PORTION OF SHAFT IS HELD WITHIN .004 [.10] TOTAL GAGE READING WITH THE INDICATOR ON O.D. OF GROUND RING GAGE AS SHOWN. THE GAGE BEING STATIONARY WITH RESPECT TO THE ROTOR. END PLAY NOT TO EXCEED .010 [.25] MEASURED WITH NO THRUST. CTQ REQUIREMENT SEE EP000105-008. RoHS & REACH ETC REQUIREMENT SEE EP000014

PERFORMANCE CURVE	APPROVED SAMPLE		
16345211			
UL COMPONENT	CSA		
FILE#	CCN#	FILE#	GUIDE#
E14663	XEWZR	LR4642	4211-01
CUSTOMER	DISTRIBUTION		

CRITICAL TO QUALITY CHARACTERISTICS(CTQs)	DRAWING REVISION	REVISION BY	DATE
(P) PROCESS	J	MINJING JIANG	04-11-2022
(E) ENGINEERING	ECO	TRISTIA ZHAO	04-11-2022
(A) APPLICATION	ECO DESCRIPTION		
(R) REGULATORY	CONSOLIDATED NAMEPLATE		
(L) LIFE	COPYRIGHT REGAL BELLOIT AMERICA, INC. ALL RIGHTS RESERVED. PROPRIETARY AND CONFIDENTIAL INFORMATION - THIS DOCUMENT IS THE PROPERTY OF REGAL BELLOIT AMERICA, INC. (OWNER) AND CONTAINS OWNER'S PROPRIETARY INFORMATION. ANY REPRODUCTION OR OTHER FIRM RECEIVING IT IS DENIED. BY RECEIVING IT, TO AGREE THAT IT, AND/OR ANY PART OF IT, SHALL NOT BE DISCLOSED TO ANY PERSON, CORPORATION OR OTHER ENTITY, DUPLICATED, AND/OR USED, EXCEPT AS EXPRESSLY APPROVED IN WRITING IN ADVANCE BY OWNER. THIS DOCUMENT SHALL BE RETURNED TO OWNER UPON REQUEST. IT MAY BE SUBJECT TO CERTAIN RESTRICTIONS UNDER APPLICABLE EXPORT CONTROL LAWS AND REGULATIONS.		

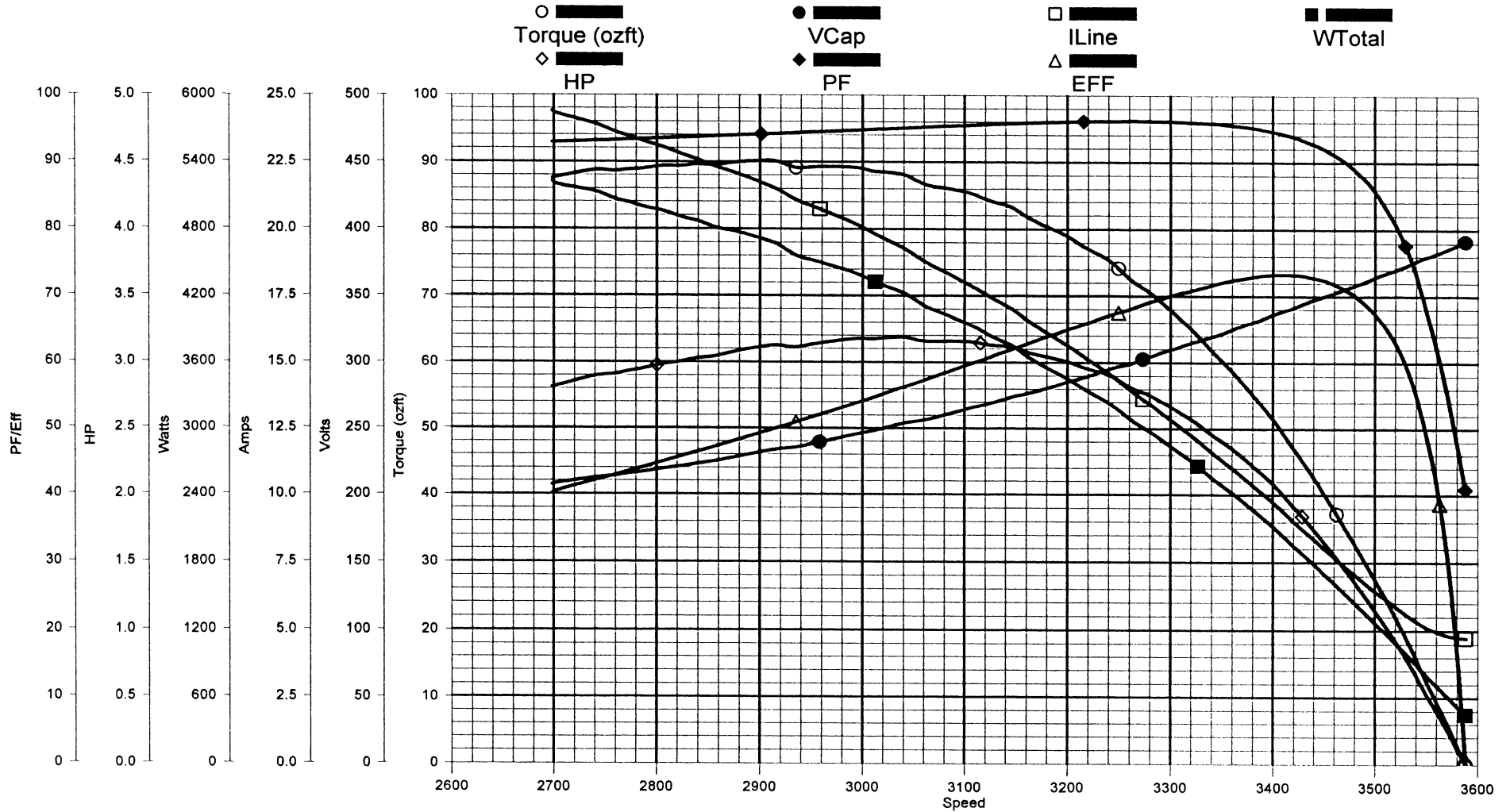
TOLERANCES UNLESS OTHERWISE SPECIFIED	DRAWN BY:
DEC. INCH mm ANGLE	AS
.X ±0.1 [±2.5] ±0.5°	DATE: 09-15-2010
.XX ±0.02 [±0.51]	APPROVED BY:
.XXX ±0.005 [±0.127]	TZ
.XXXX ±0.0005 [±0.0127]	DATE: 09-15-2010
REMOVE BURRS & BREAK SHARP EDGES .003/.015 [0.076/.381]	REFERENCE
CORNER FILLETS .02 [51]	MATERIAL
MACHINED SURFACES 12/ INCH mm 3/2	PROCESS/FINISH
mm SHOWN IN [BRACKETS]	SIZE DWG NO
	C B229SE
	THIRD ANGLE PROJECTION

DESCRIPTION	MATERIAL	PROCESS/FINISH
Regal Beloit America, Inc. MODEL-CFHP-56FR OUTLINE		
SIZE DWG NO	B229SE	SHEET 1

AO Smith

Performance Down Project: 0443261 (High Speed)

Tuesday, August 03, 2004 06:27 PM



TRACKING #: 10027138
 SBU: Pump
 ENGINEER: RAY PHILLIPS
 TECHNICIAN: TODD
 BENCH: 2
 TORQUE CELL: 350 lb-in
 NP RPM: 3450
 # SPEEDS: 1
 MOTOR #: 1
 TYPE: CX

CUSTOMER: AOS
 MODEL: 0443261A
 FRAME: 56C
 PHASES: 1
 HP: 1.00
 VOLTS: 230.0
 HERTZ: 60
 START CAP: 0.00
 RUN CAP: 25.00
 COMMENT3:

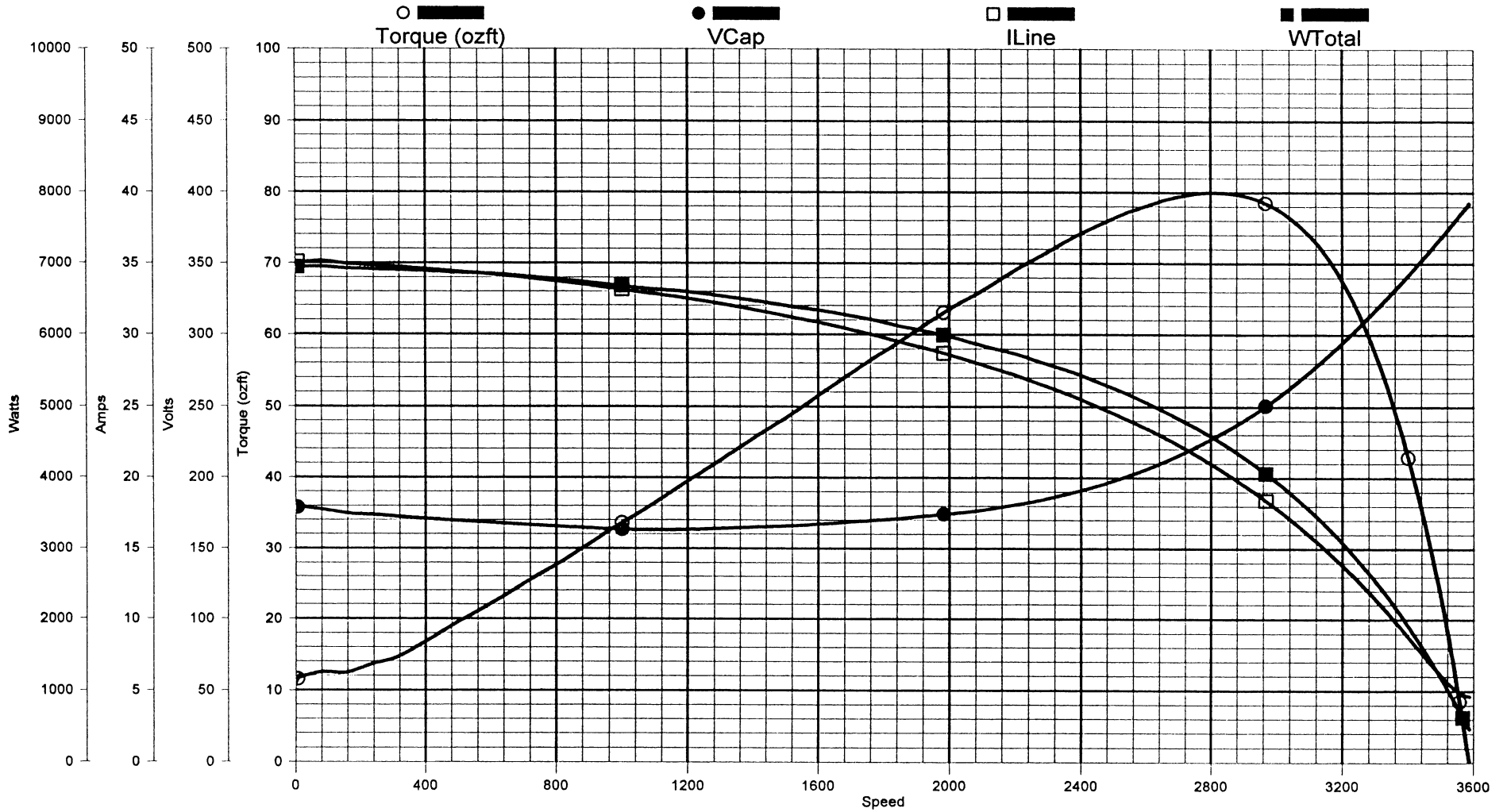
Breakdown TQ: 89.2 oz-ft
 Locked Rotor TQ: 12.0 oz-ft
 Locked Rotor Amps: 35.9A
 Pull-up TQ: 12.0 oz-ft

DESCRIPTION: OFFSET
 BDT: 89.24
 MT: 90.18
 SF: 33.60
 LRT: 0.00
 LRA: 0.00
 PUT: 0.00
 COMMENT1:
 COMMENT2:
 COMMENT4:

AO Smith

Performance Up Project: 0443261 (High Speed)

Tuesday, August 03, 2004 06:40 PM



TRACKING #: 10027138

SBU: Pump

ENGINEER: RAY PHILLIPS

TECHNICIAN: TODD

BENCH: 2

TORQUE CELL: 350 lb-in

NP RPM: 3450

SPEEDS: 1

MOTOR #: 1

TYPE: CX

CUSTOMER: AOS

MODEL: 0443261A

FRAME: 56C

PHASES: 1

HP: 1.00

VOLTS: 230.0

HERTZ: 60

START CAP: 0.00

RUN CAP: 25.00

COMMENT3:

DESCRIPTION: 0-SYNC

BDT: 79.98

MT: 79.98

SF: 33.60

LRT: 11.07

LRA: 35.09

PUT: 11.07

COMMENT1:

COMMENT2:

COMMENT4: